

Water Audit Tool

Water Audit (2008) - WAVE Report

Last edited by userName on 2008-11-14 13:38:29

Report Summary

Domestic Water Calculator

WC Usage (litres per day)	563
Urinal Usage (litres per day)	1500
Taps Usage (litres per day)	400
Tea and Coffee (litres per day)	132
Dishwasher / Sinks (litres per day)	500
Total litres per day	3095
Total litres per person per day	31
Total per year (m3)	1126
Total per person per year (m3)	11

Mass Balance Calculator

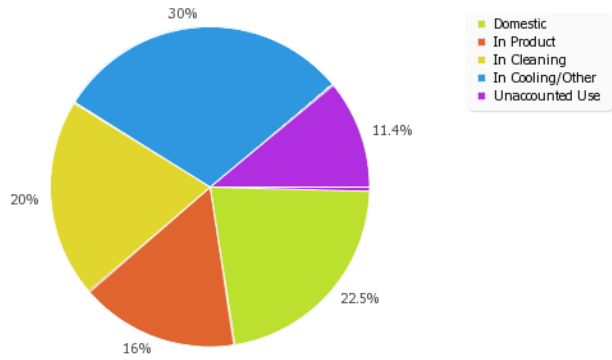
Domestic water use	1126 m3 per year
Unaccounted Water Use	574 m3 per year
Water 'losses' to drain/land/air	700 m3 per year

Yearly Report

This section of your report summarises the data for the selected year, providing water use and cost breakdowns.

Water Use Breakdown

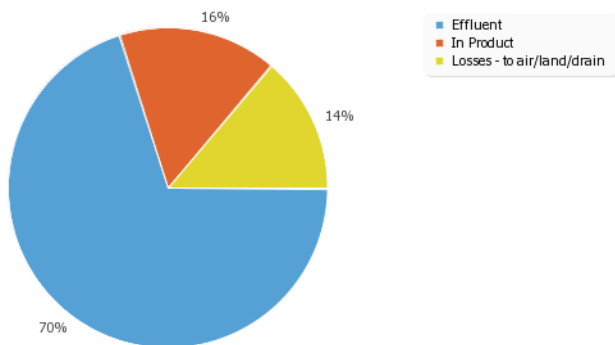
This graph provides an indication of how you are currently using water and how much of your use is unaccounted for - i.e. is not domestic use or declared as used in product, cleaning or cooling/other.



Title	Data
Domestic	22.5 %
In Product	16 %
In Cleaning	20 %
In Cooling	30 %
Unaccounted Use	11.5 %

Water Outputs Breakdown

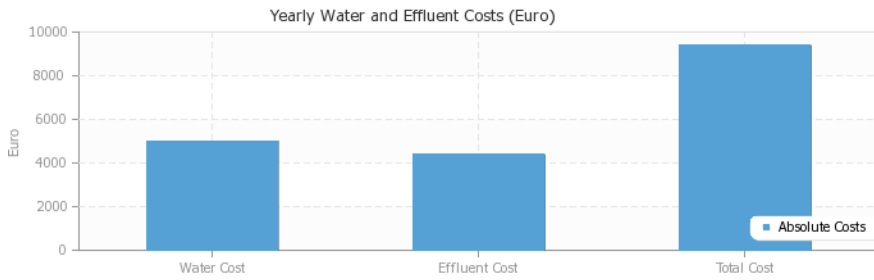
This graph provides an indication of water outputs and how much of your water is lost - i.e. not in your declared figures for effluent or in product



Title	Data
Effluent	70 %
In Product	16 %
Losses - to air/land/drain	14 %

Yearly Water and Effluent Costs

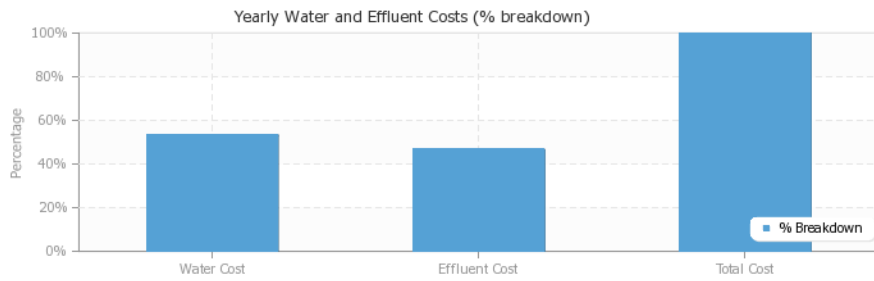
This graph shows the absolute cost of water and effluent per year.



Title	Data
Water Cost	€ 5000
Effluent Cost	€ 4375
Total Cost	€ 9375

Yearly Water and Effluent Costs (% breakdown)

This graph shows the relative % cost of water and effluent per year

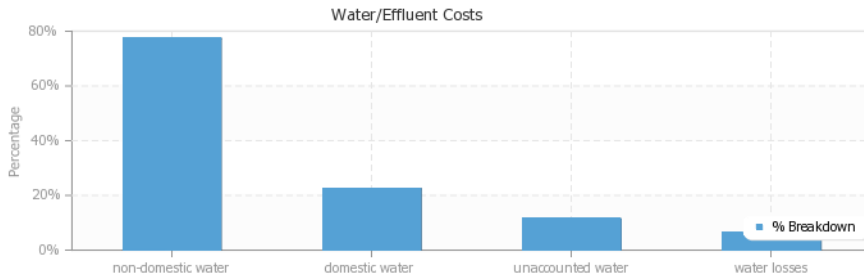


Title	Data
Water Cost	53.3 %
Effluent Cost	46.7 %
Total Cost	100 %

Water/Effluent Costs

This graph shows a % breakdown of costs in relation to non-domestic and domestic water use, unaccounted water use and water 'losses'

Please note that the % figures are relative to the total water use cost.



Title	Data
non-domestic water	77.5 %
domestic water	22.5 %
unaccounted water	11.5 %
water losses	6.2 %

The absolute costs are as follows and indicate the potential for cost savings:

Yearly cost of non-domestic water use: **8716** Euro

Yearly cost of domestic water use: **2534** Euro

Yearly cost of unaccounted water use: **1291** Euro

Yearly cost of water losses to air, land etc.: **700** Euro

For some hints and tips on how you can reduce water use, select the [option below](#). If you would like a site visit from Greenbusiness then send us an e-mail (you can do this from the ["Contact Us"](#) part of the website) or call the Helpline on 01 813 1086

KPI Data

Title	Data
m3 per employee	50 m3
m3 per square m of floorspace	0 m3
m3 per 10k euro of turnover	16 m3
m3 per hour of activity	0 m3
m3 per unit of activity	10 m3

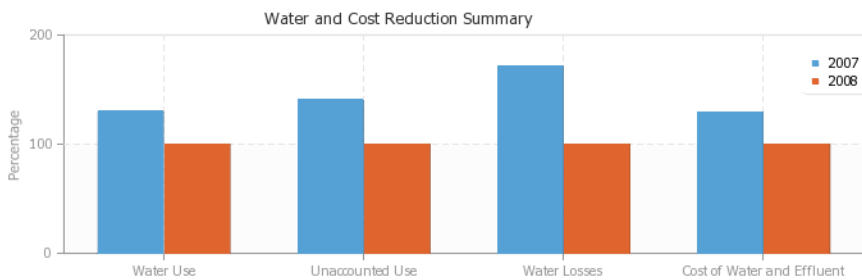
Benchmarking

This section of the report allows you to compare up to five yearly water audits (internal benchmarking). It also allows you to compare your data for the current year with other companies in your sector (where data is available) and/or with all companies that have entered data.

Water and Cost Reduction Summary

This graph allows you to track your progress on water use reduction, unaccounted water use, losses and water/effluent costs from year to year

Please note that the graphs below show % figures relative to the currently displayed audit year which will show as 100%.

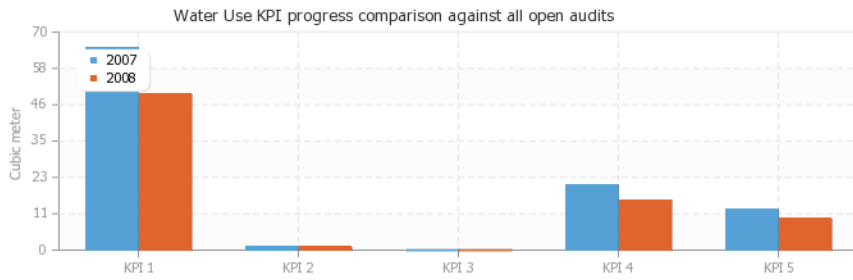


The benchmark year is 2008 and is highlighted in the table below.

Title	2007	2008
Water Use	130 %	100 %
Unaccounted Use (% of Total)	140.4 %	100 %
Water Losses	171.4 %	100 %
Cost of Water and Effluent	129.3 %	100 %

Water Use KPI progress comparison against all open audits

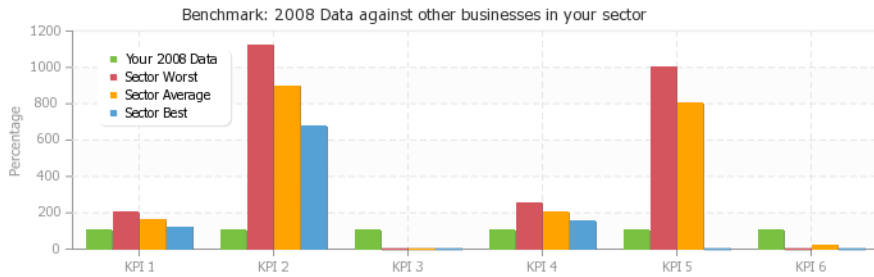
This graph allows you to track your water use reduction KPIs from year to year



- **KPI 1** - m3 per employee
- **KPI 2** - m3 per hour of activity
- **KPI 3** - m3 per sq. m of floor-space
- **KPI 4** - m3 per 10K Euro of turnover
- **KPI 5** - m3 per unit of activity

Title	2007	2008
m3 per employee	65	50
m3 per hour of activity	1.1	0.9
m3 per sq. m of floor-space	0	0
m3 per 10K Euro of turnover	21	16
m3per unit of activity	13	10

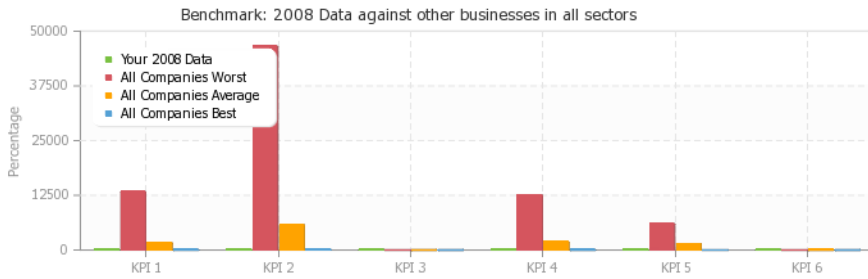
Benchmark against other businesses in your sector



- **KPI 1** - m3 per employee
- **KPI 2** - m3 per hour of activity
- **KPI 3** - m3 per sq. m of floor-space
- **KPI 4** - m3 per 10K Euro of turnover
- **KPI 5** - m3 per unit of activity
- **KPI 6** - Unaccounted Use (% of Total)

Title	Your 2008 Data	Sector Worst	Sector Average	Sector Best
m3Per Employee	100%	200 %	160 %	120 %
m3per hour of activity	100%	1118.6 %	894.8 %	670.9 %
m3per sq. m of floor-space	100%	0 %	0 %	0 %
m3per 10K Euro of turnover	100%	250 %	200 %	150 %
m3per unit of activity	100%	1000 %	800 %	0 %
Unaccounted Use (% of Total)	11.5 %	0 %	18.2 %	0 %

Benchmark against other businesses in all sectors



- **KPI 1** - m3per employee
- **KPI 2** - m3 per hour of activity
- **KPI 3** - m3 per sq. m of floor-space
- **KPI 4** - m3 per 10K Euro of turnover
- **KPI 5** - m3 per unit of activity
- **KPI 6** - Unaccounted Use (% of Total)

Title	Your 2008 Data	All Companies Worst	All Companies Average	All Companies Best
m3Per Employee	100%	13333.3 %	1592.7 %	19.3 %
m3per hour of activity	100%	46586 %	5740.1 %	7 %
m3per sq. m of floor-space	100%	0 %	0 %	0 %
m3per 10K Euro of turnover	100%	12500 %	1806.3 %	6.3 %
m3per unit of activity	100%	6000 %	1440.9 %	0 %
Unaccounted Use (% of Total)	11.5 %	0 %	1.9 %	0 %

Top Tips

[Top Tips: Factory Use](#)

[Download Top Tips: Factory Use in PDF format](#)

[Top Tips: Catering Use](#)

[Download Top Tips: Catering in PDF format](#)

[Top Tips: Office Use](#)

[Download Top Tips: Office in PDF format](#)